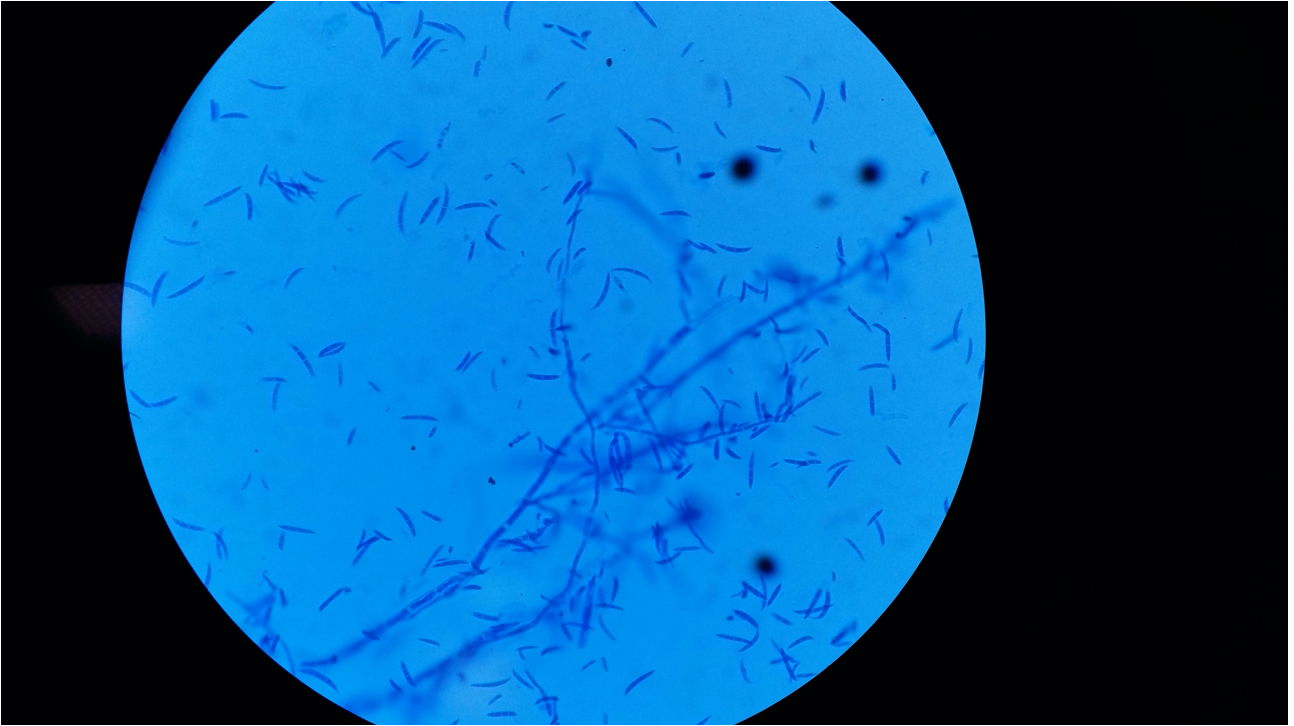


Supplementary Figure 1. Fungal KOH examination (400X): Broad, sparsely septate branching fungal hyphae suggestive of Zygomycetes.



Supplementary Figure 2. Fungal KOH examination (400X): Two types of fungal hyphae- Later grew mixture of *Aspergillus niger* and *Aspergillus flavus*.



Supplementary Figure 3. Lactophenol Cotton Blue mount (400X): Suggestive of *Fusarium* sp.