

SUPPLEMENTARY MATERIAL

Assessment of the bacteriological contamination of selected street foods in open and closed environments in the city of Lucknow

Ruchi Verma, Sunita Mishra

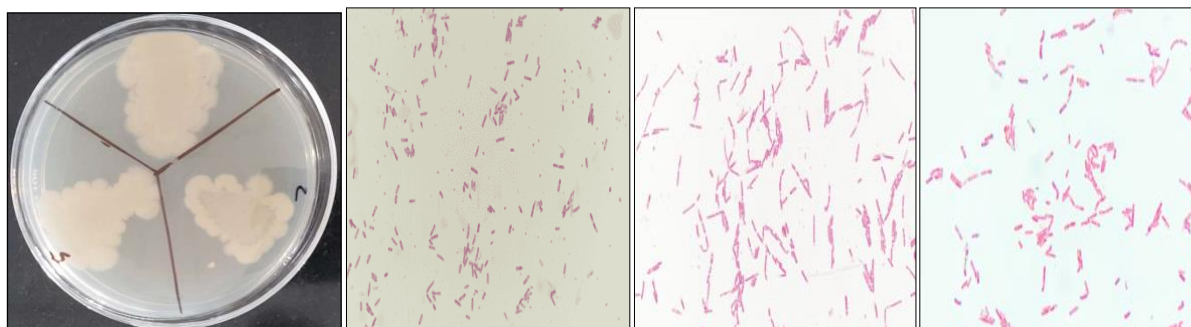
Department of Food and Nutrition, SHS, Babasaheb Bhimrao Ambedkar University (A Central University), Vidya Vihar, Lucknow, India

Correspondence: Sunita Mishra, Department of Food and Nutrition, SHS, Babasaheb Bhimrao Ambedkar University (A Central University) Vidya Vihar, Raebareli Road Lucknow, 226025, India.

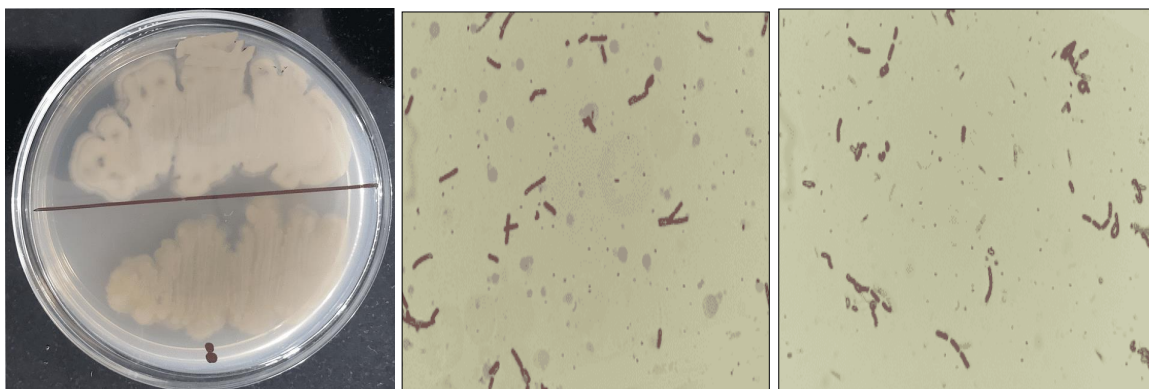
E-mail: sunitabbau@gmail.com

Key words: street foods, pathogenic bacteria, vendors, GHPs, practices.

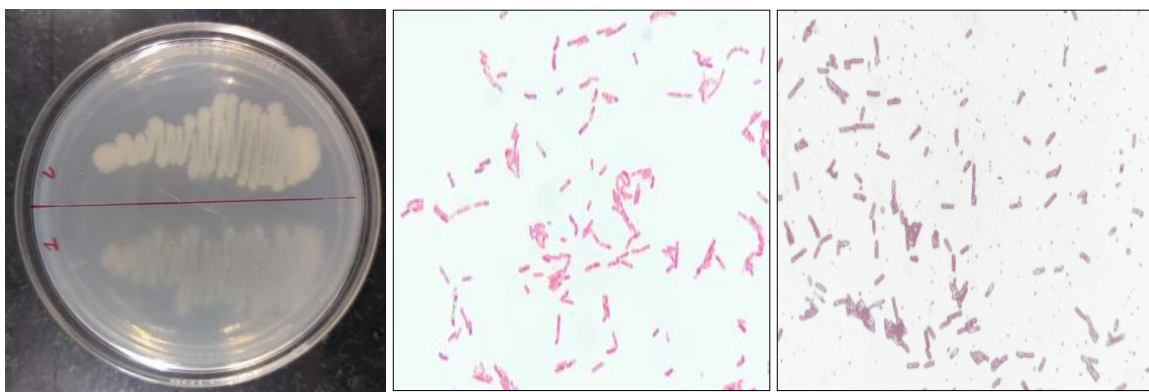
Morphological identification of microorganisms



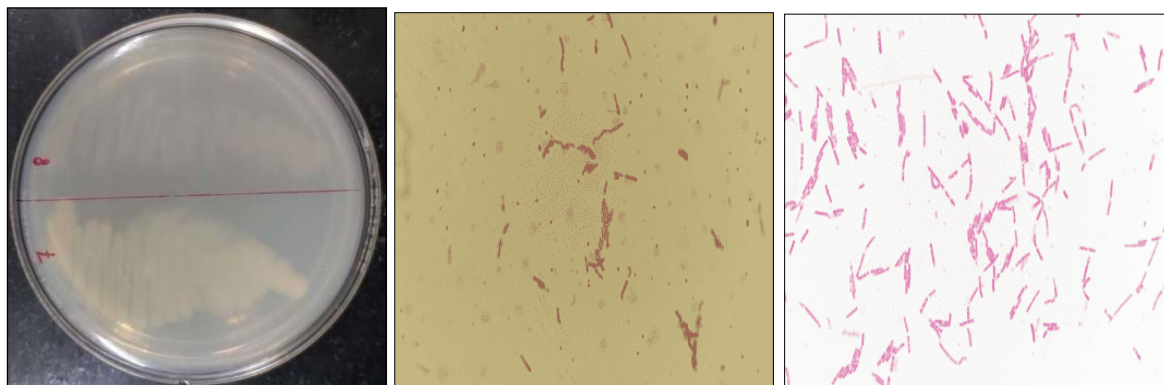
Supplementary Figure 1. Bacteria were isolated from cooked spicy chickpea, dumplings samples collected from open-air stalls in Charbagh, Aminabad. The 16S rRNA sequencing data for the isolated strain RVCPL2 revealed that it was most closely related to *Staphylococcus aureus*.



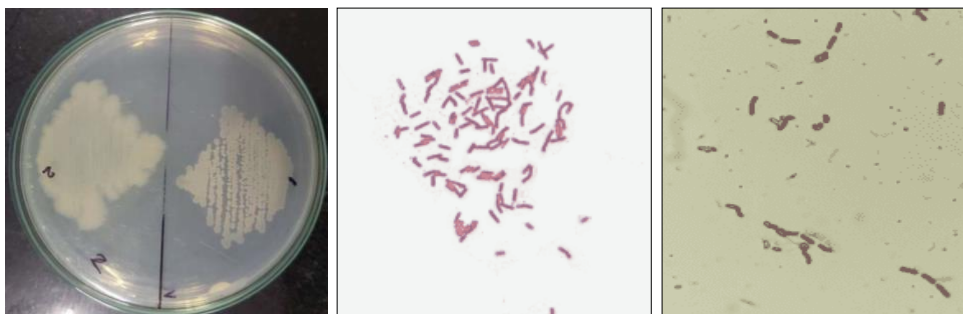
Supplementary Figure 2. Bacteria were isolated from cooked spicy chickpea samples collected from indoor shops in LuLu Mall. The 16S rRNA sequencing data for the isolated strain RVCPL1 revealed that it was most closely related to *Lactobacillus acidophilus*.



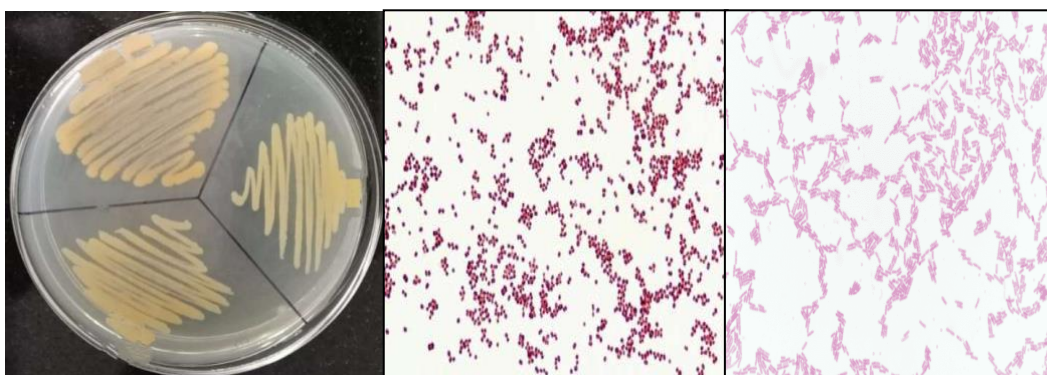
Supplementary Figure 3. Bacteria were isolated from samosa samples collected from open-air stalls in Charbagh. The 16S rRNA sequencing data for the isolated strain RVS2 revealed that it was most closely related to *Campylobacter lanienae*.



Supplementary Figure 4. Bacteria were isolated from samosa samples collected from indoor shops in LuLu Mall. The 16S rRNA sequencing data for the isolated strain RVS3 revealed that it was most closely related to *Brevibacterium linens*.



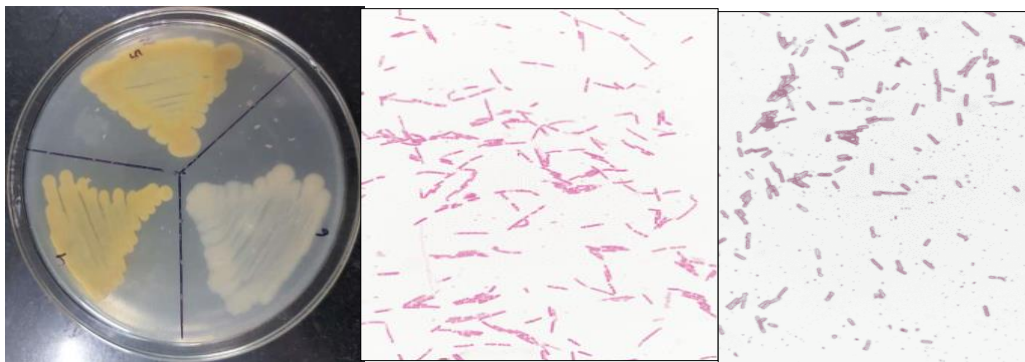
Supplementary Figure 5. Bacteria were isolated from chowmein samples collected from open-air stalls in Charbagh. The 16S rRNA sequencing data for the isolated strain RVC2 revealed that it was most closely related to *Priestia megaterium*.



Supplementary Figure 6. Bacteria were isolated from chowmein, dumplings samples collected from indoor shops in LuLu Mall. The 16S rRNA sequencing data for the isolated strain RVCL1 revealed that it was most closely related to *Staphylococcus epidermidis*.



Supplementary Figure 7. Bacteria were isolated from spicy panipuri, burger samples collected from open-air stalls in Charbagh, Kaiserbagh. The 16S rRNA sequencing data for the isolated strain RVK1 revealed that it was most closely related to *Klebsiella* sp.



Supplementary Figure 8. Bacteria were isolated from spicy panipuri, burger samples collected from indoor shops in LuLu Mall. The 16S rRNA sequencing data for the isolated strain RVL1 revealed that it was most closely related to *Escherichia coli*.