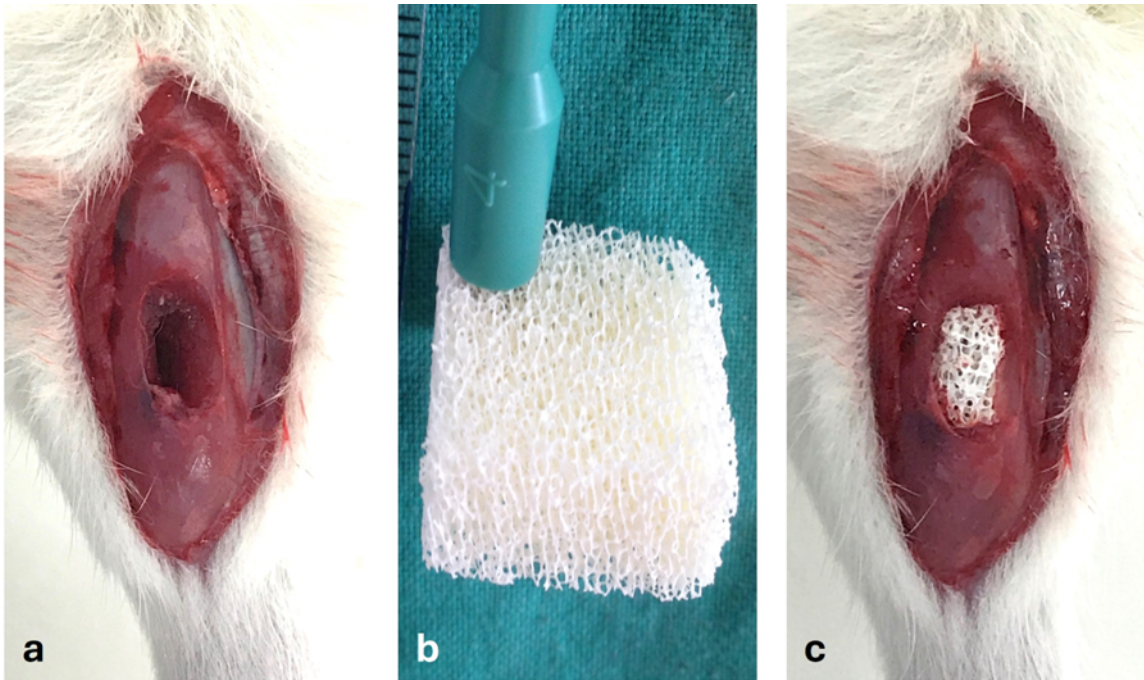
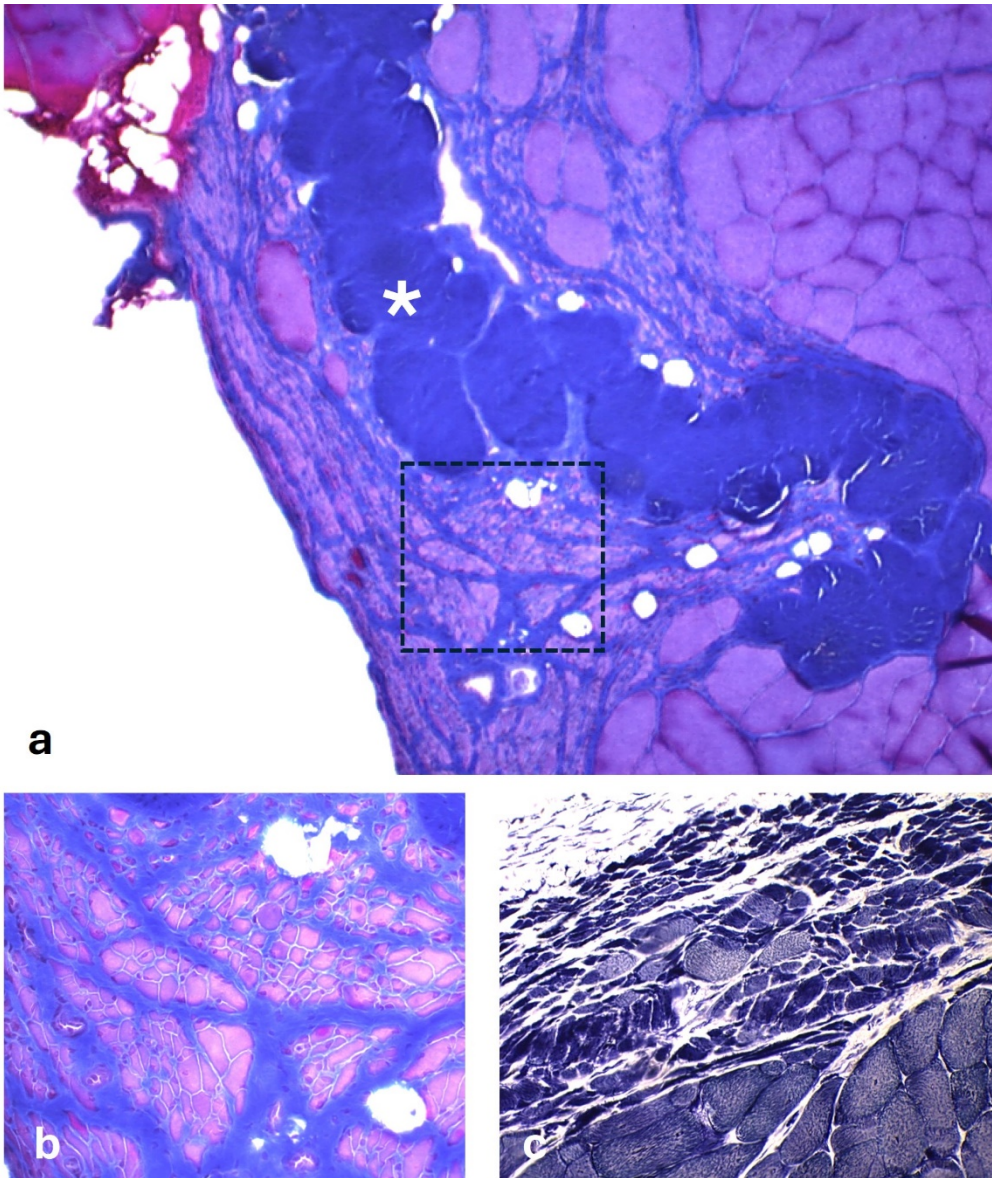


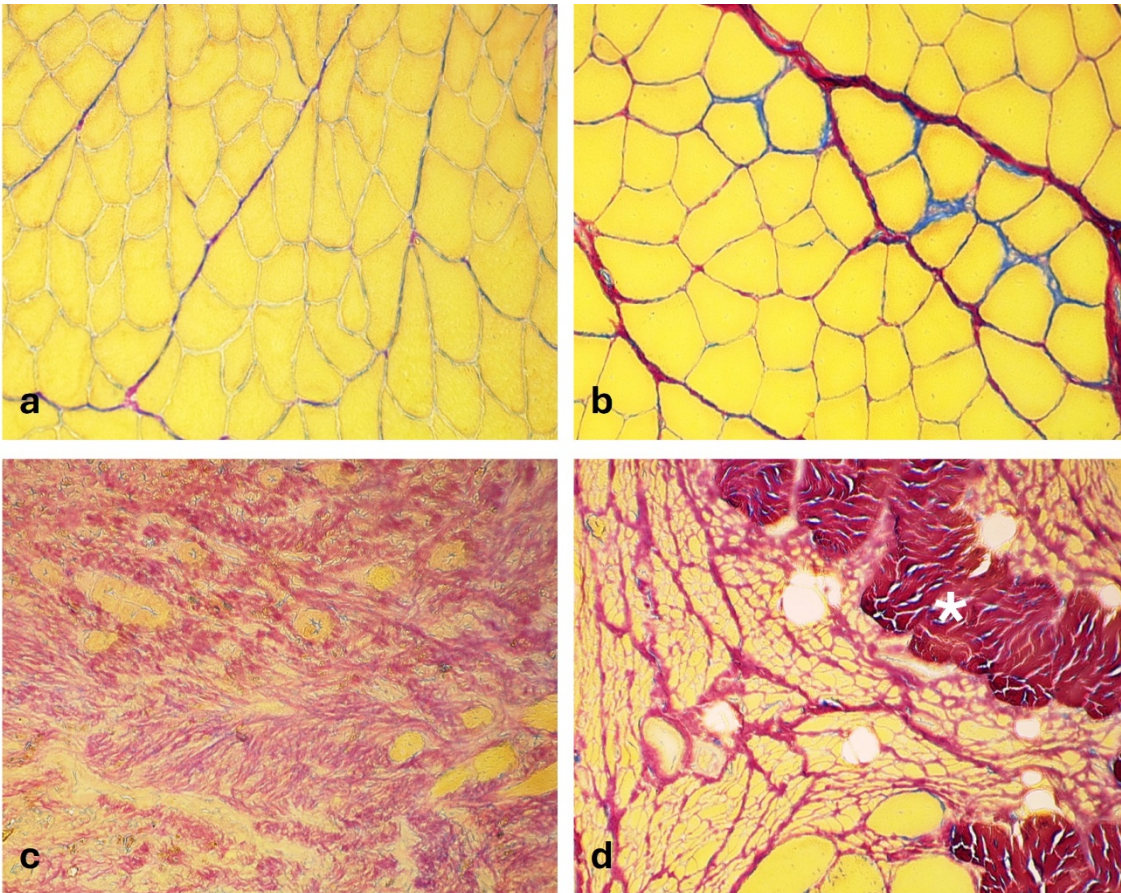
Supplementary material



Supplementary Figure 1. (a) Volumetric defect in the tibialis anterior muscle, (b) bone substitution material, (c) collagen matrix implant within the volumetric defect.



Supplementary Figure 2. CS group. Sixty days postimplantation. (a) The image shows a large tendon (asterisk) in the vicinity, of which there is significant fascicular atrophy (lower left) compared to the normal muscle fibers on the right. (b) Inset of the image (a) with significant perimysial fibrosis separating the atrophic muscle fascicles. (c) Fascicular atrophy and poor fiber-type differentiation. Original magnification: a, 10x; b, 40x;c, 20x. (a) and (b), Masson's trichrome; (c), NADH-tr.



Supplementary Figure 3. (a) NC group 60 days postimplantation, (b) RC group 60 days postimplantation, (c) FC group 60 days postimplantation, (d) CS group. 60 days postimplantation. In NC, a higher percentage of type III collagen is observed. In RC, the percentage of collagen I and II is balanced. In FC and CS, type I collagen is clearly predominant. Original magnification: 10x. Herovici' polychrome staining.